

Part Number: GRSMINI163

With sixteen digital sensor ports, the GRSMINI163 II is ideal for applications that require a low-cost climate monitor and a large number of remote sensors

- Accessible through a web browser
- Built-in temperature sensor
- 3 analog inputs for 0-5VDC sensors
- 16 digital sensor ports for Geist remote sensors
- Multi level alarms with escalation
- Alarm notifications sent by email and SNMP

Need a lot of remote sensors in a rack mount? The GRSMINI163 II has web access, graphing, and alarm alerts sent by email or SNMP. Connect up to sixteen remote digital sensors, no splitters required. Supports three analog sensors and has an internal temperature sensor.

Web Interface

The web interface is the primary way to interact with the GRSMINI163 II. This interface allows a user to remotely check the status of the environment, view graphs of logged data and see web cam images.

Configuration and administration of the unit is done through the web interface. Access is user name and password protected. SSL encryption can be used for added security through the HTTPS capabilities in browsers.

The firmware running on the GRSMINI163 II is updated through the web interface.

Other Access Methods

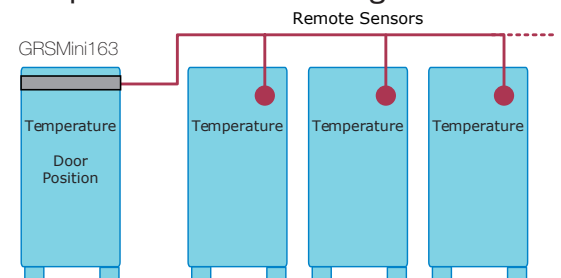
Besides web access, there are several methods to access sensor data from the unit. Current sensor readings and meta-tagged system info is available in XML. Logged data can be downloaded as a CSV file that can be viewed with spreadsheet software.

The device also supports SNMP (v1, v2c, v3). This allows dozens of Network Monitoring programs such as HP OpenView, IP Sentry, MRTG, or What's Up Gold (Ipswitch) to easily add the GBB100 to the list of monitored devices.

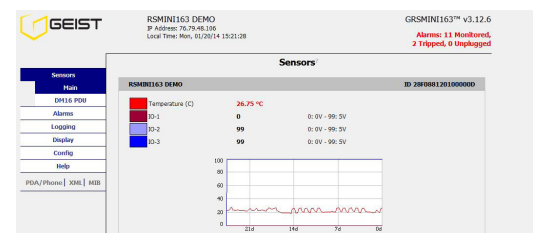


The GRSMINI163 II is a rack-mounted climate monitor with 16 digital sensor ports, 3 analog inputs and an internal temperature sensor.

Multiple Cabinet Monitoring



A single GRSMINI163 II with remote digital sensors, can monitor up to 17 cabinets. The total aggregate cable length for digital sensors should not exceed 600'.



Readings from the internal temperature sensor and analog inputs are shown on the Sensors page.

Part Number: **GRSMini163**

Alarms

A user sets alarm thresholds (up to 200) to define sensor boundaries and indicate what to do if there is a problem. Multiple thresholds are assigned to a sensor for alarm escalation.

The unit continuously compares sensor readings with these thresholds. If a reading exceeds a threshold, the alarm is “tripped” and the GRSMini163 II alerts the appropriate recipients by email and/or SNMP. When the alarm ends, the unit sends a “cleared” notice.

Remote Sensors

Analog: Analog inputs on the GRSMini163 II support any contact closure sensors and industry standard sensors that provide a 0-5VDC signal. Names for the input channels are configured through the web interface.

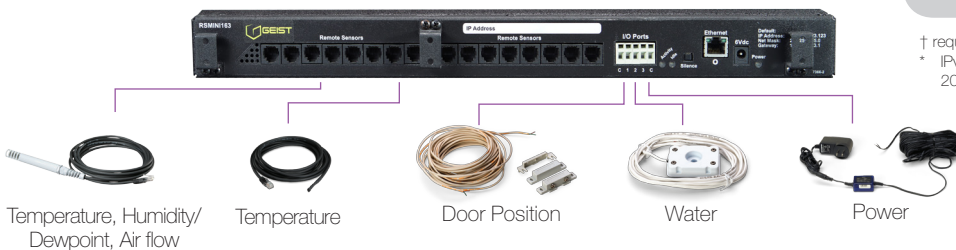
Examples: water sensor, door position, smoke alarm

Digital: Digital sensors provide sensor data through a serial protocol. Once connected, the GRSMini163 II automatically detects and identifies the sensor type. These sensors can be given a “friendly” name to make them easier to identify. No splitters are needed, since there is a built-in 16 port splitter.

Examples: temperature, temp/airflow, Analog to Digital Converter

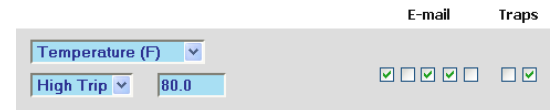
Internal Board Heating

The internal temperature sensor is calibrated when it comes from the factory. However, depending on airflow, the sensor can be heated by internal circuitry and read a few degrees above ambient. The unit has an internal temperature offset that can be adjusted to correct for this.



Please note the information contained herein is for informational purposes only. Technical claims listed depend on a series of technical assumptions. Your experience with these products may differ if you operate the products in an environment, which is different from the technical assumptions. Geist reserves the right to modify these specifications without prior notice. Geist makes no warranties, express or implied, on the information contained in this document.

Alarm Thresholds



A basic alarm threshold includes sensor name, boundary value, boundary type (high/low), and in case of alert recipients and alert methods (email, SNMP).

Sensor Details

Built-in Sensors

Temperature: -22 to 185 °F (-30 to 85 °C), +/- 0.5 °C

Remote Sensor Support

Digital: 16 ports (up to 600' total cable length)
Analog: 3 inputs (contact closure, 0-5 VDC)

Specifications

Physical: 19"L x 1.75"H x 3"W (rack-mount, 1U space)
Power: 6VDC (supplied wall transformer)
Ethernet: 10 Mbps, RJ-45 receptacle
Real Time Clock (RTC) with power backup
Reset IP push-button: restores factory defaults
Warranty: 1 year

Software Features

HTTP / HTTPS: web access
Alarms: high/low values, multiple thresholds per sensor
ESMTP / POP3: email alerts, ESMTP / POP3 auth
SNMP (v1, v2c, v3): gets, trap and clear alerts, MIB
Paging: email to pager proxy
XML: meta-tagged sensor values, alarms, config
Syslog: send debug messages to Syslog server
Web interface: 4 styles to choose from
Access-control: 3 access levels (view, control, admin)
Web cams (optional): Up to four can be displayed

† requires auto-dialer

* IPv6, SNMPv3, graphing and camera support by 2012 via firmware update

Geist Americas

800.432.3219
geistglobal.com

Geist DCIM
1.877.449.4150
geistglobal.com

Geist Europe

+44 (0) 1823 275100
geistglobal.com

Geist Asia

China
+86.755.86639505
geistglobal.com

Hong Kong
+852 90361927
geistglobal.com